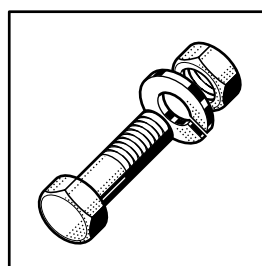


## UCA

Spare Parts  
Pièces Détachées  
Ersatzteile  
Onderdelen



---

Electrical components listed in this catalogue are rated for the following supply voltages:

Les composants électriques énumérés dans ce catalogue sont prévus pour les tensions suivantes:

Die in diesem Katalog aufgeführten Elektroteile beziehen sich auf folgende Anschlußspannungen:

De in deze catalogus afgebeelde elektrische componenten zijn geschikt voor de volgende aansluitspanningen:

200V / 50Hz / 3  
200V / 60Hz / 3  
380V / 50Hz / 3  
**230V / 50Hz / 3**  
**400V / 50Hz / 3 / N**  
415V / 50Hz / 3 / N

For other voltages, refer to the wiring diagram shipped with the machine.

Pour d'autres tensions, se référer au schéma électrique envoyé avec la machine.

Bei nicht aufgeführten Anschlußspannungen bitte den, der Maschine beigelegten, Schaltplan beachten.

Voor eventueel andere aansluitspanningen, raadpleeg het elektrische schema welke zich bij de machine bevind.

---

**Contents**

---

Roller table .....	4
Frame and Panels .....	5
Tank .....	6
Filters .....	7
Booster .....	8
Wash pump .....	10
Wash system .....	11
Rinse system .....	12
Drain .....	13
Pipework .....	14
Drive unit .....	16
Reciprocating mechanism .....	17
Condensers .....	19
Curtains & deflectors .....	20

---

**Inhalt**

---

Rollentisch .....	4
Gestell und Verkleidungen .....	5
Tank .....	6
Siebe .....	7
Erhitzer .....	8
Waschpumpe .....	10
Waschsystem .....	11
Klarspülsystem .....	12
Ablauf .....	13
Verrohrung .....	14
Antrieb .....	16
Schwingrahmen .....	17
Kondensatoren .....	19
Vorhänge & Abweisbleche .....	20

---

**Sommaire**

---

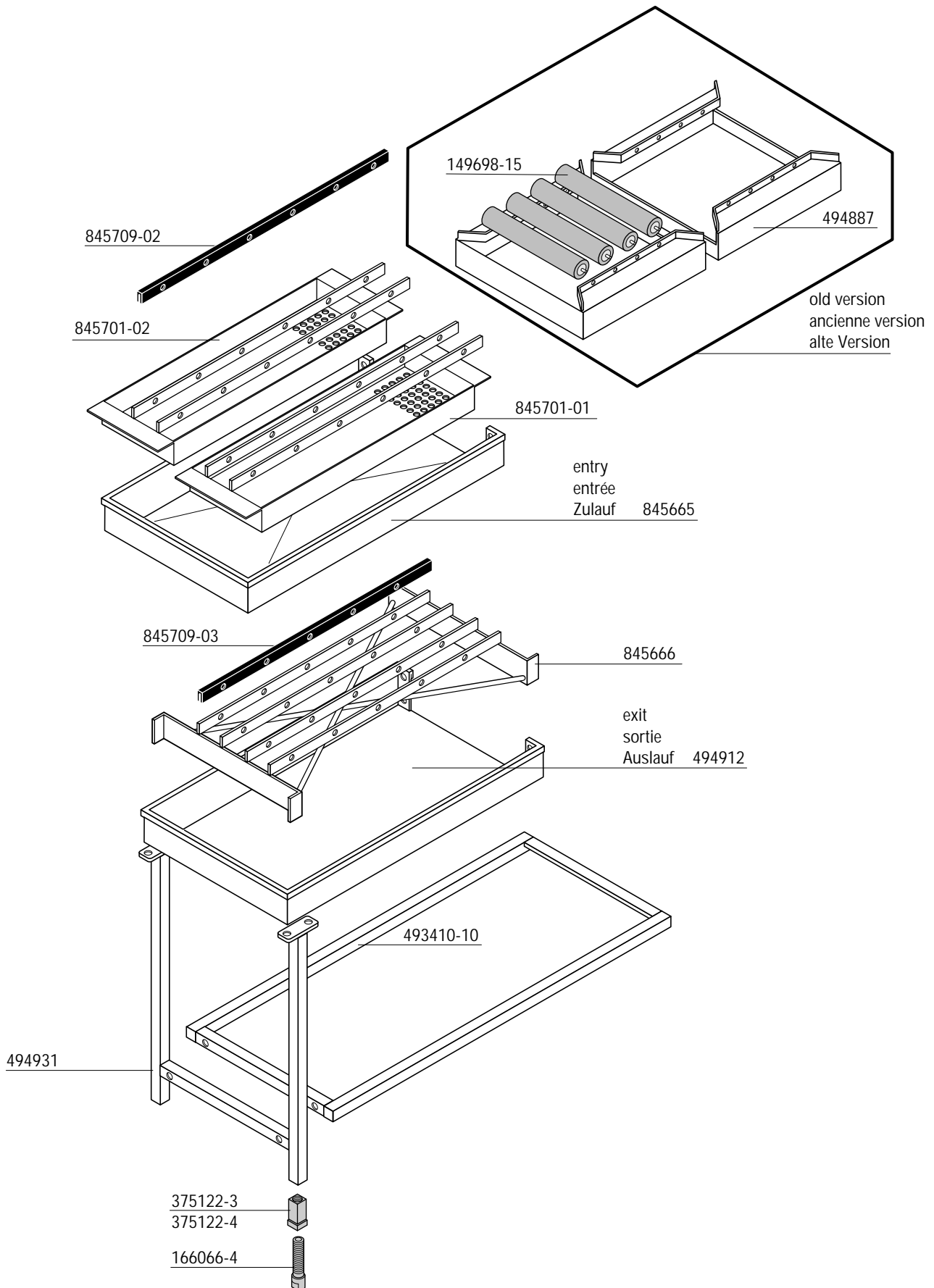
Table à rouleaux .....	4
Châssis et panneaux .....	5
Bac .....	6
Filtres .....	7
Chaudière .....	8
Pompe de lavage .....	10
Système de lavage .....	11
Système de rinçage .....	12
Vidange .....	13
Tuyauterie .....	14
Entraînement .....	16
Mécanisme d' actionnement du transport .....	17
Condenseurs .....	19
Rideaux & déflecteurs .....	20

---

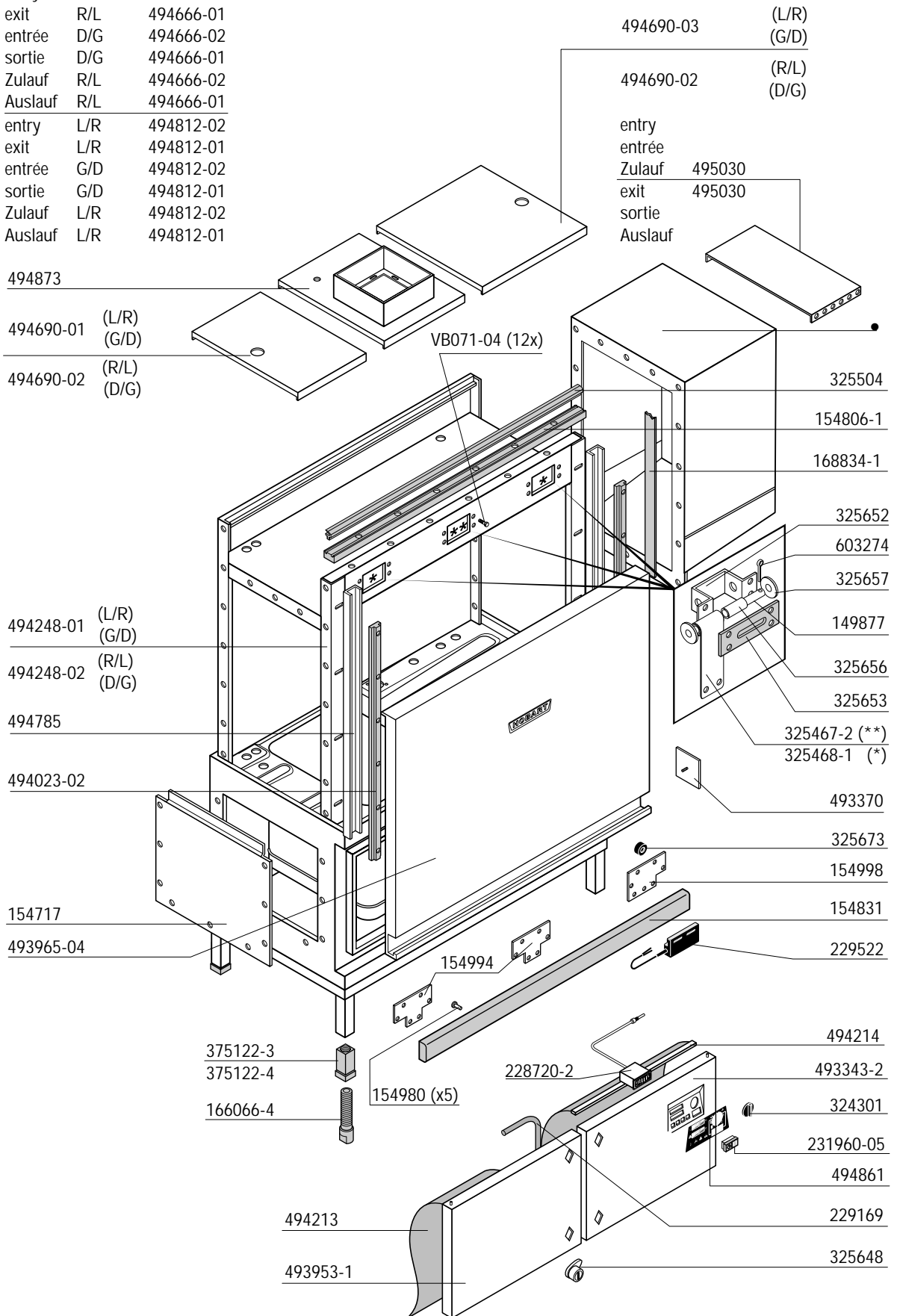
**Inhoud**

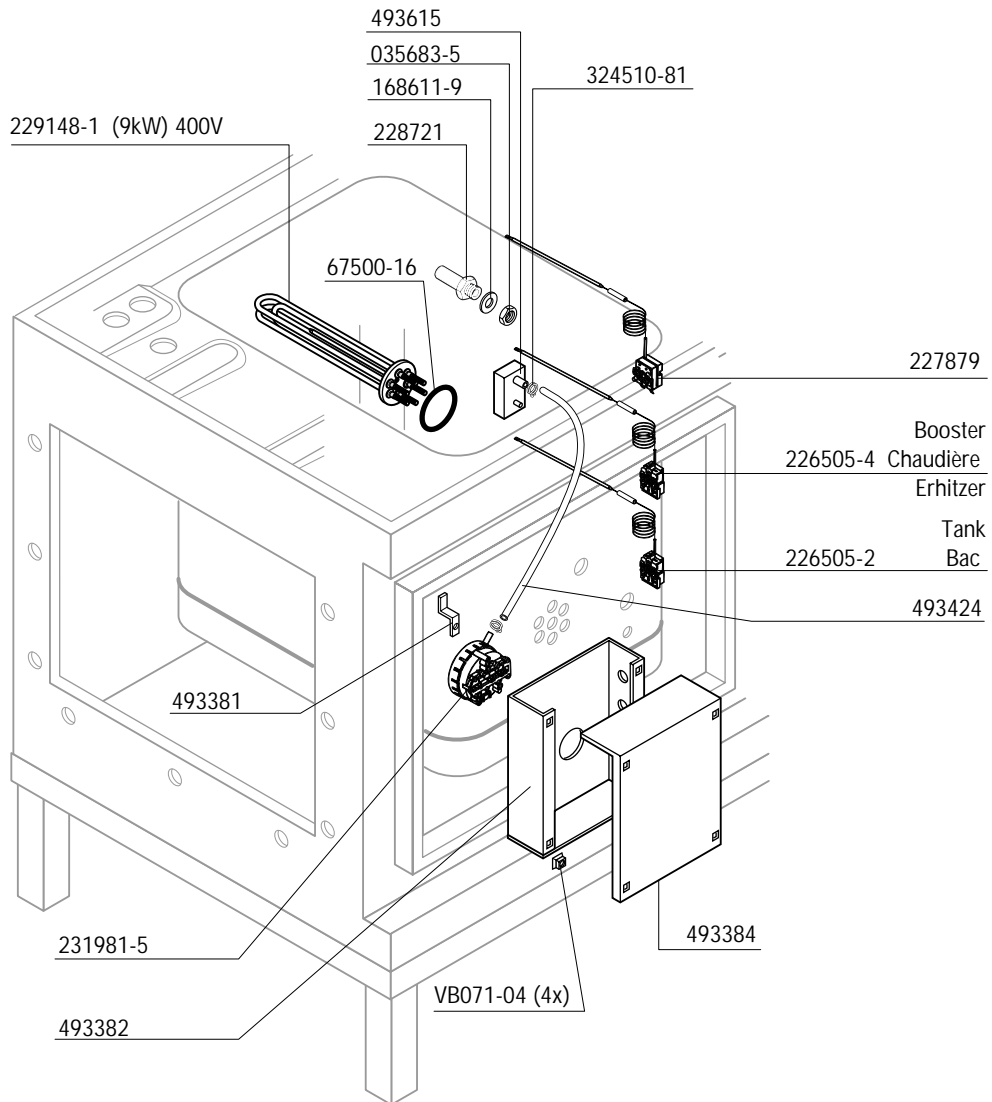
---

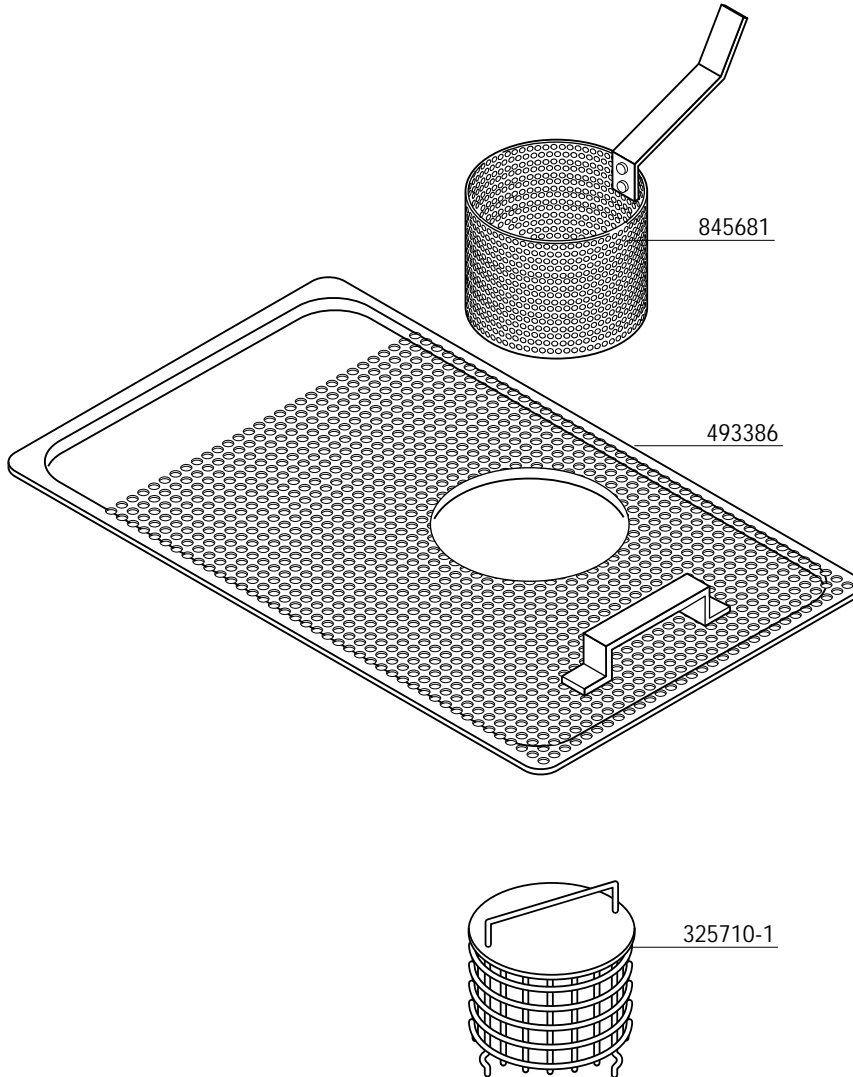
Roltafel .....	4
Frame en Panelen .....	5
Tank .....	6
Zeven .....	7
Booster .....	8
Waspomp .....	10
Wassysteem .....	11
Spoelsysteem .....	12
Afvoer .....	13
Pijpleiding .....	14
Aandrijving .....	16
Verende raam .....	17
Condensatoren .....	19
Gordijnen & schuiven .....	20

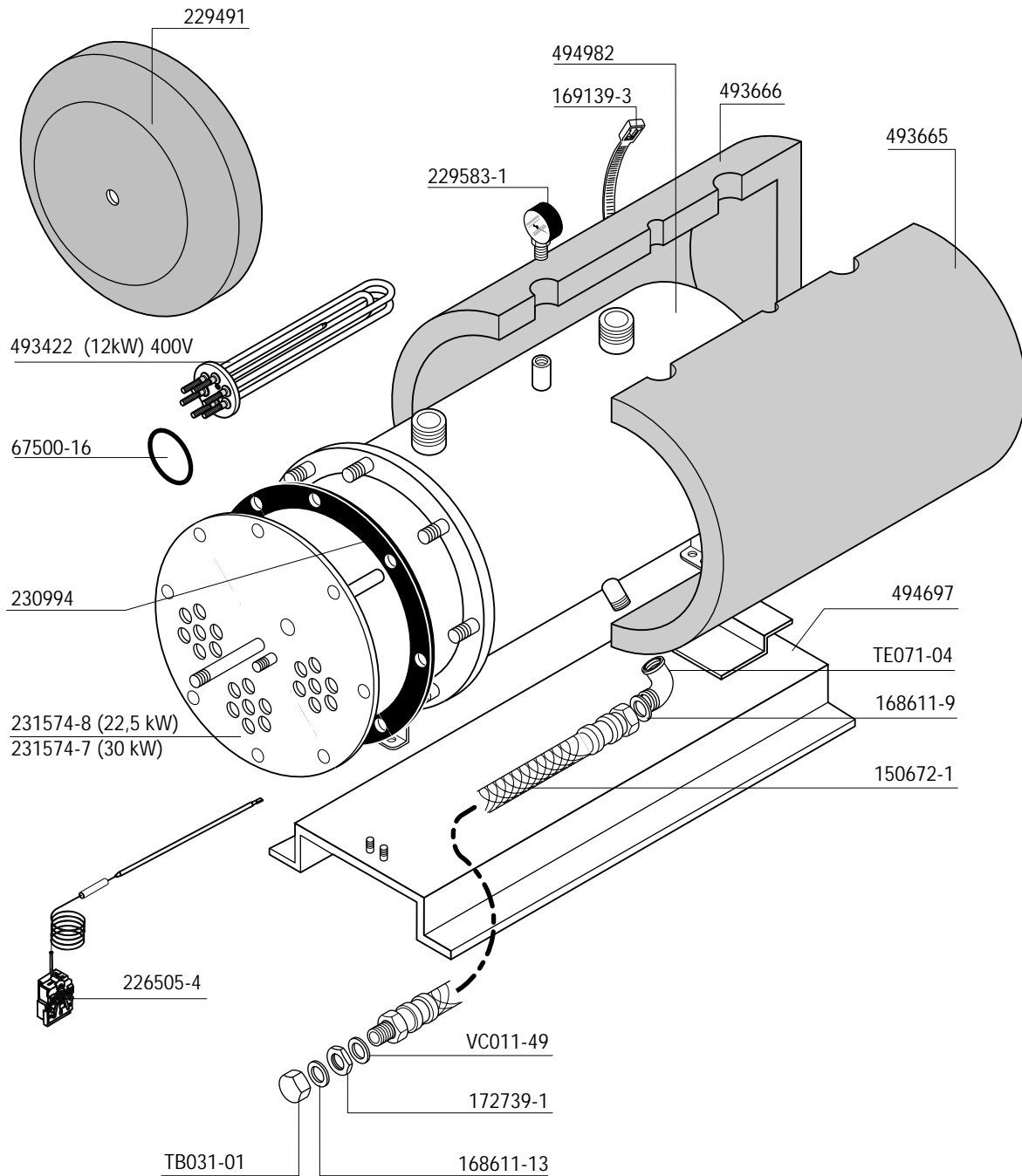


- entry R/L 494666-02
- exit R/L 494666-01
- entrée D/G 494666-02
- sortie D/G 494666-01
- Zulauf R/L 494666-02
- Auslauf R/L 494666-01
- entry L/R 494812-02
- exit L/R 494812-01
- entrée G/D 494812-02
- sortie G/D 494812-01
- Zulauf L/R 494812-02
- Auslauf L/R 494812-01

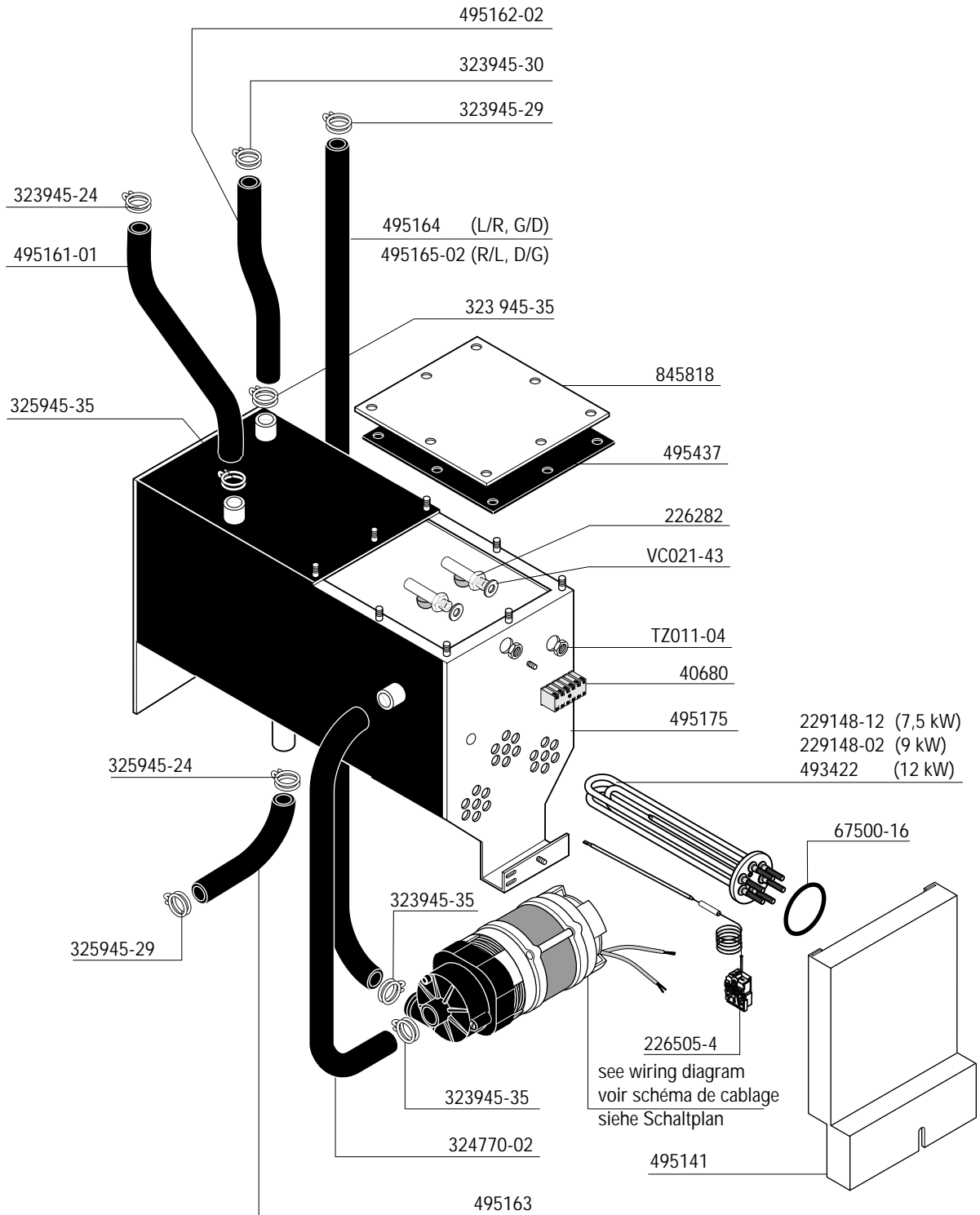


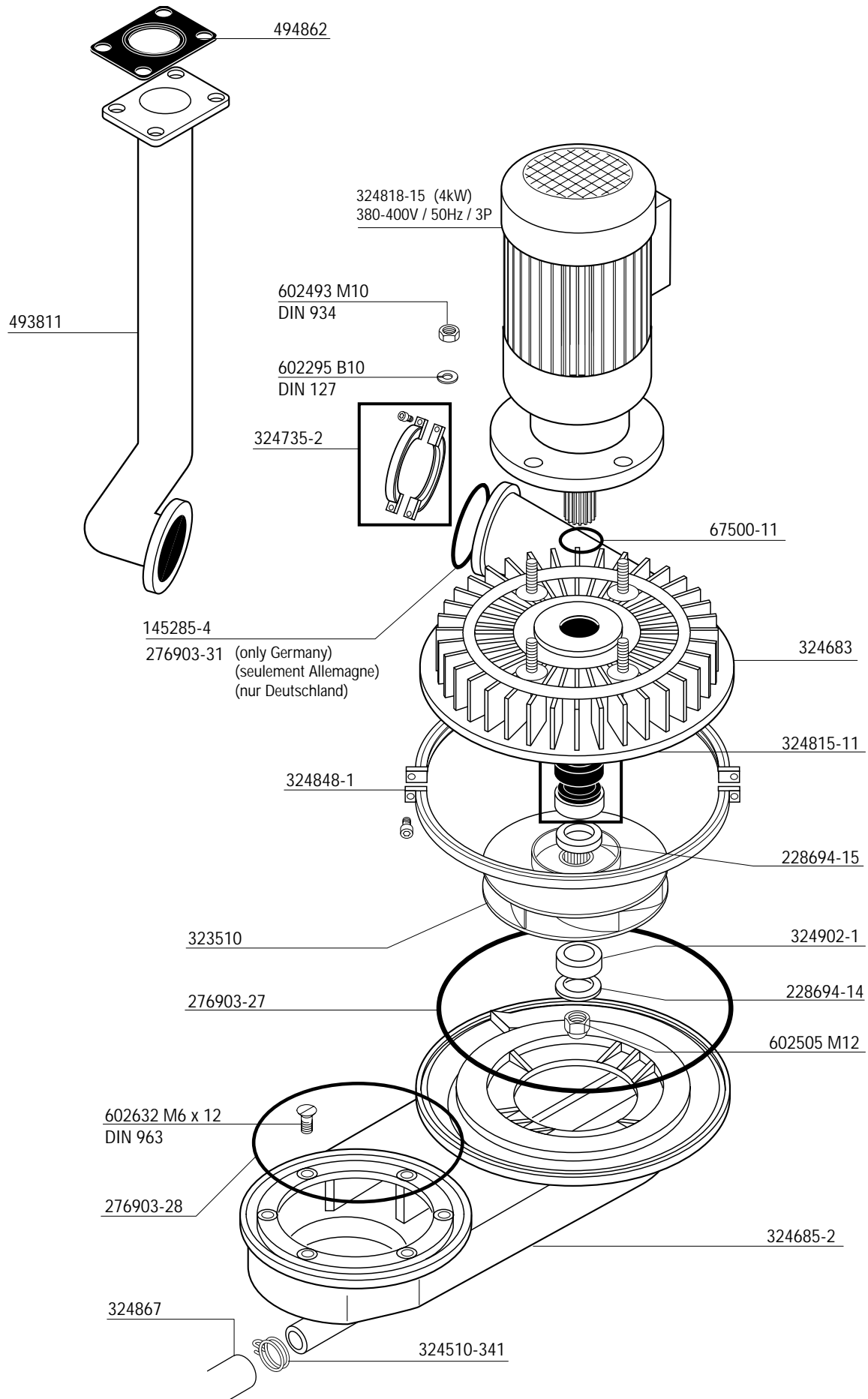


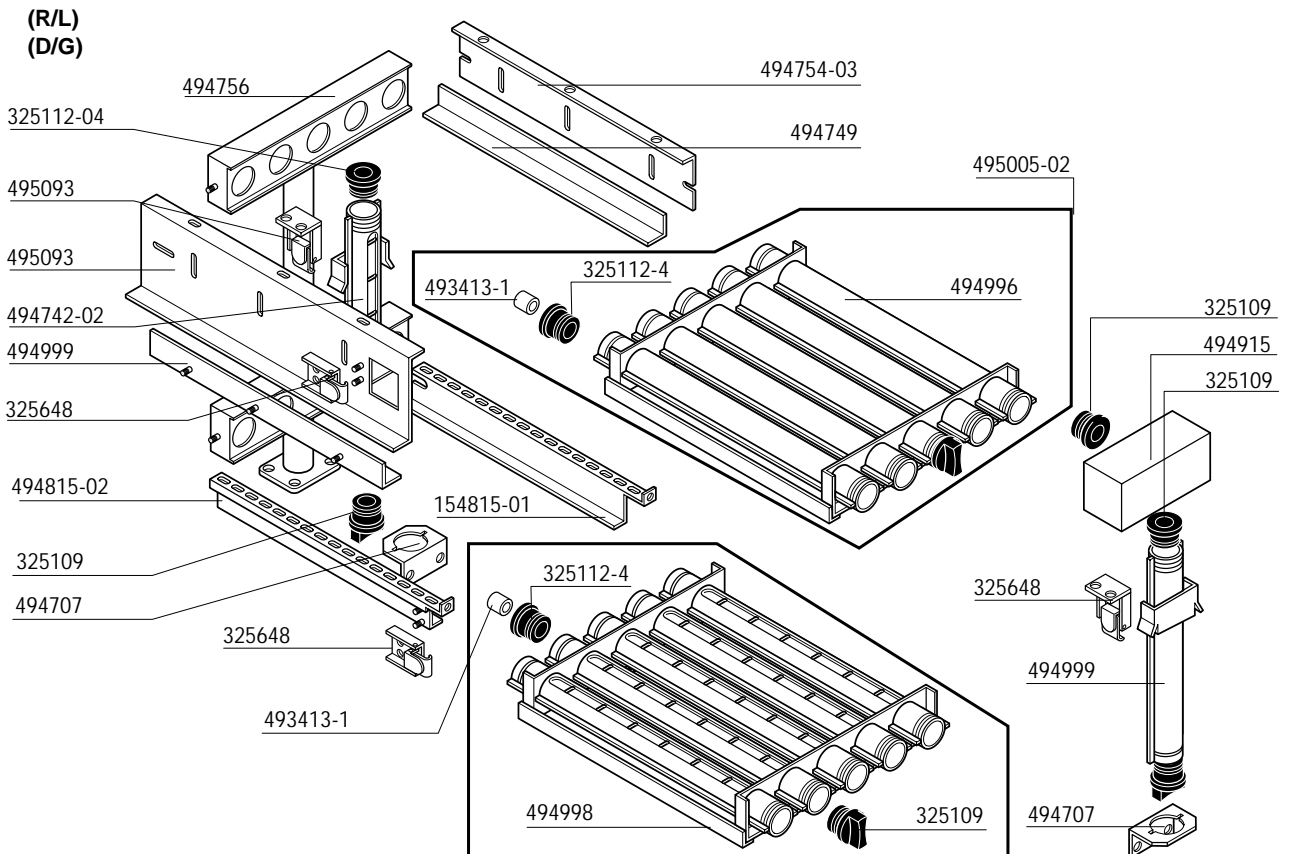
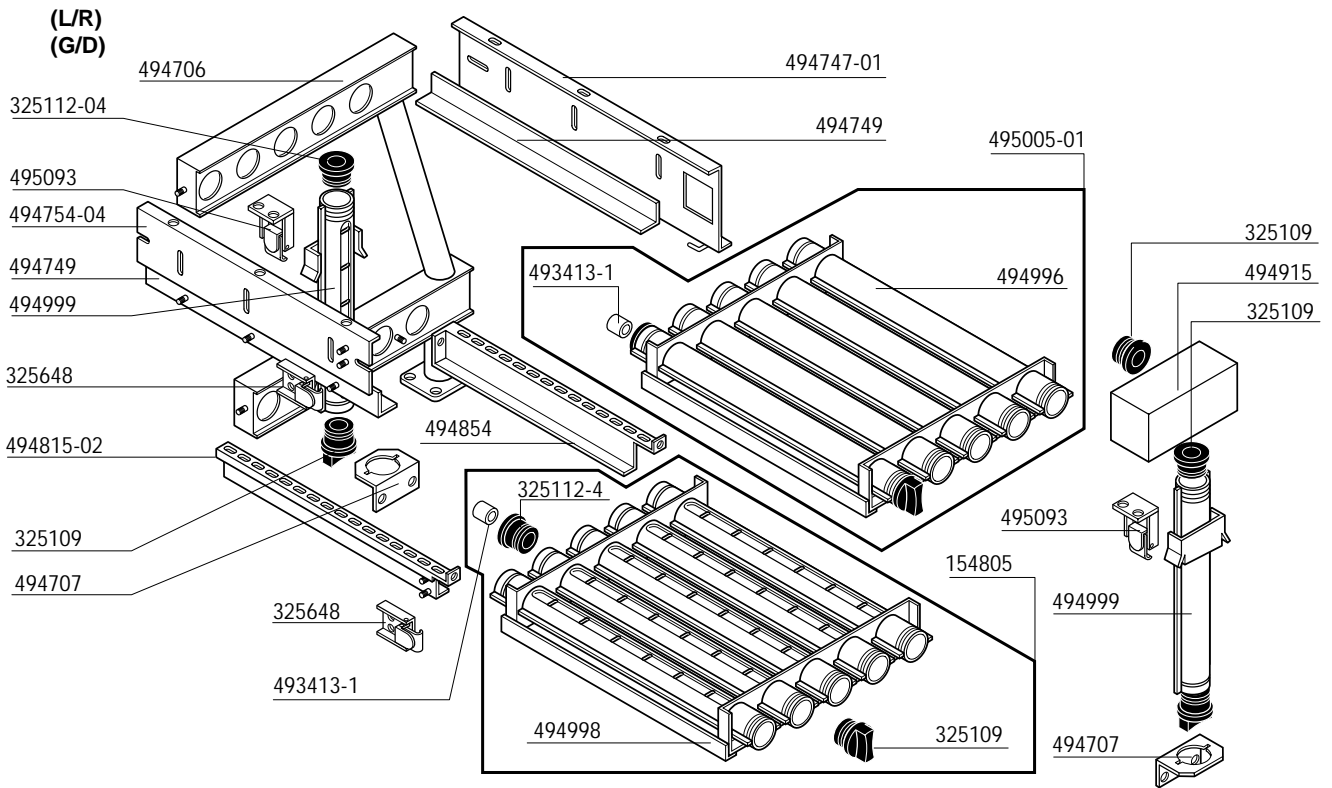


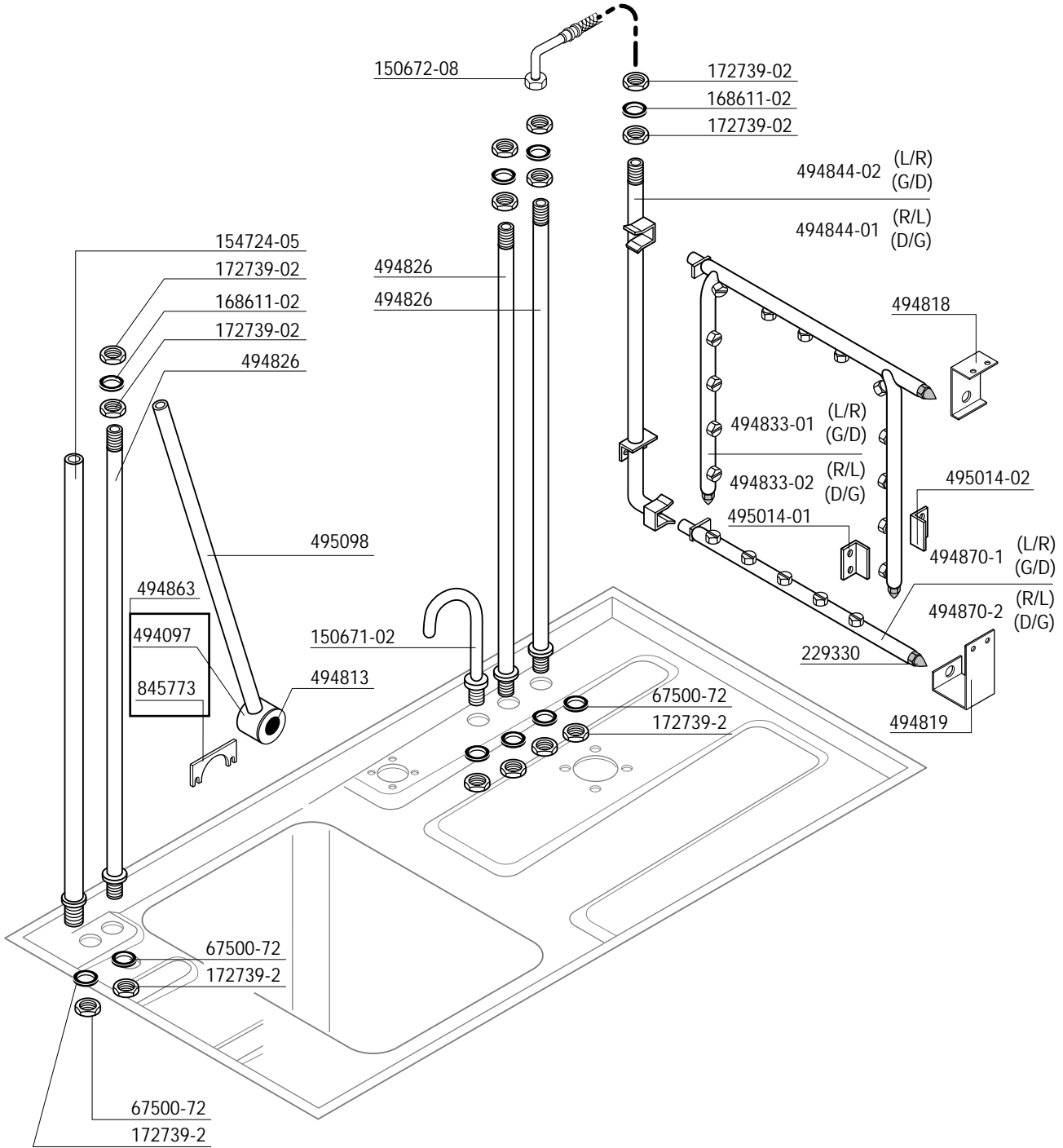


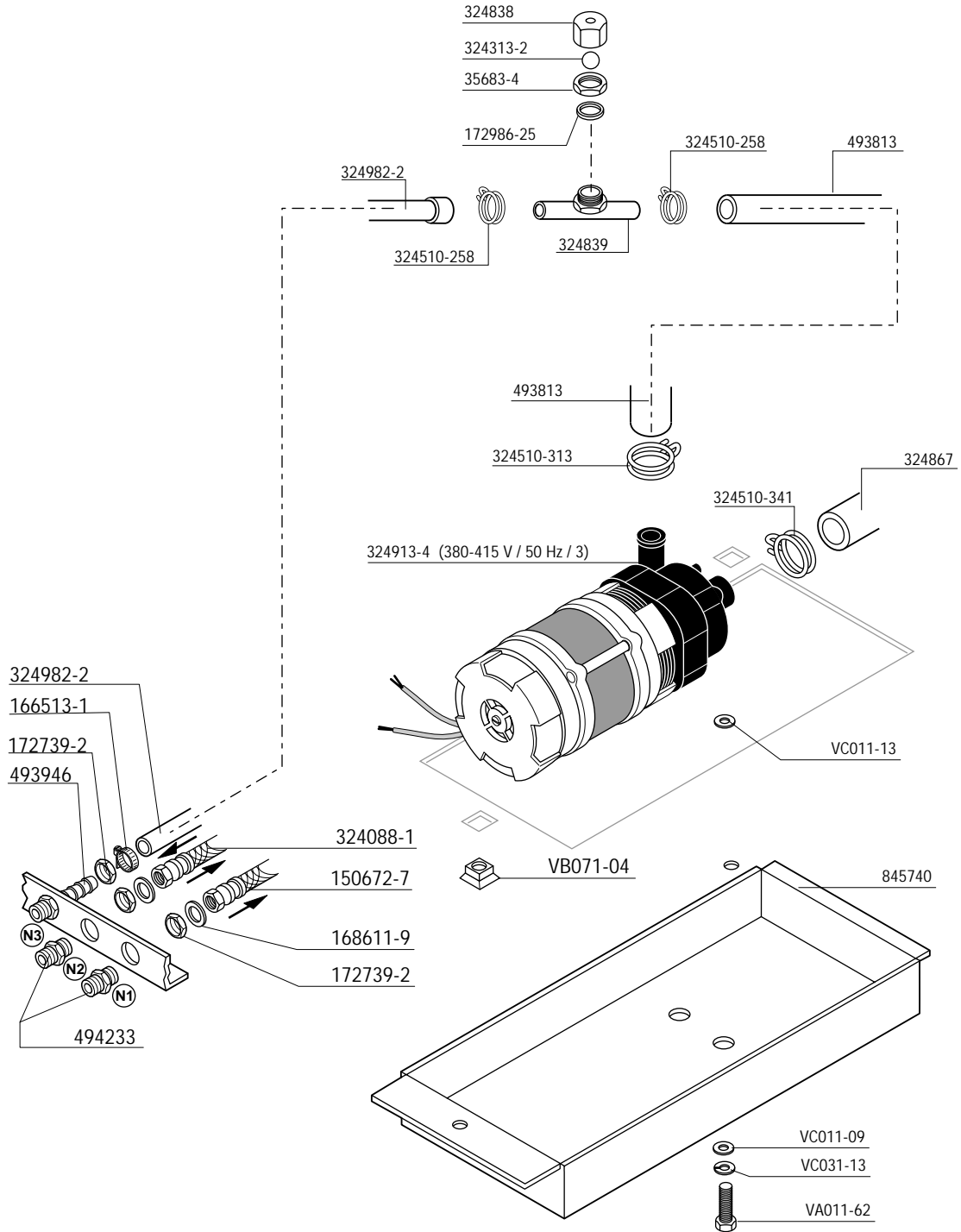


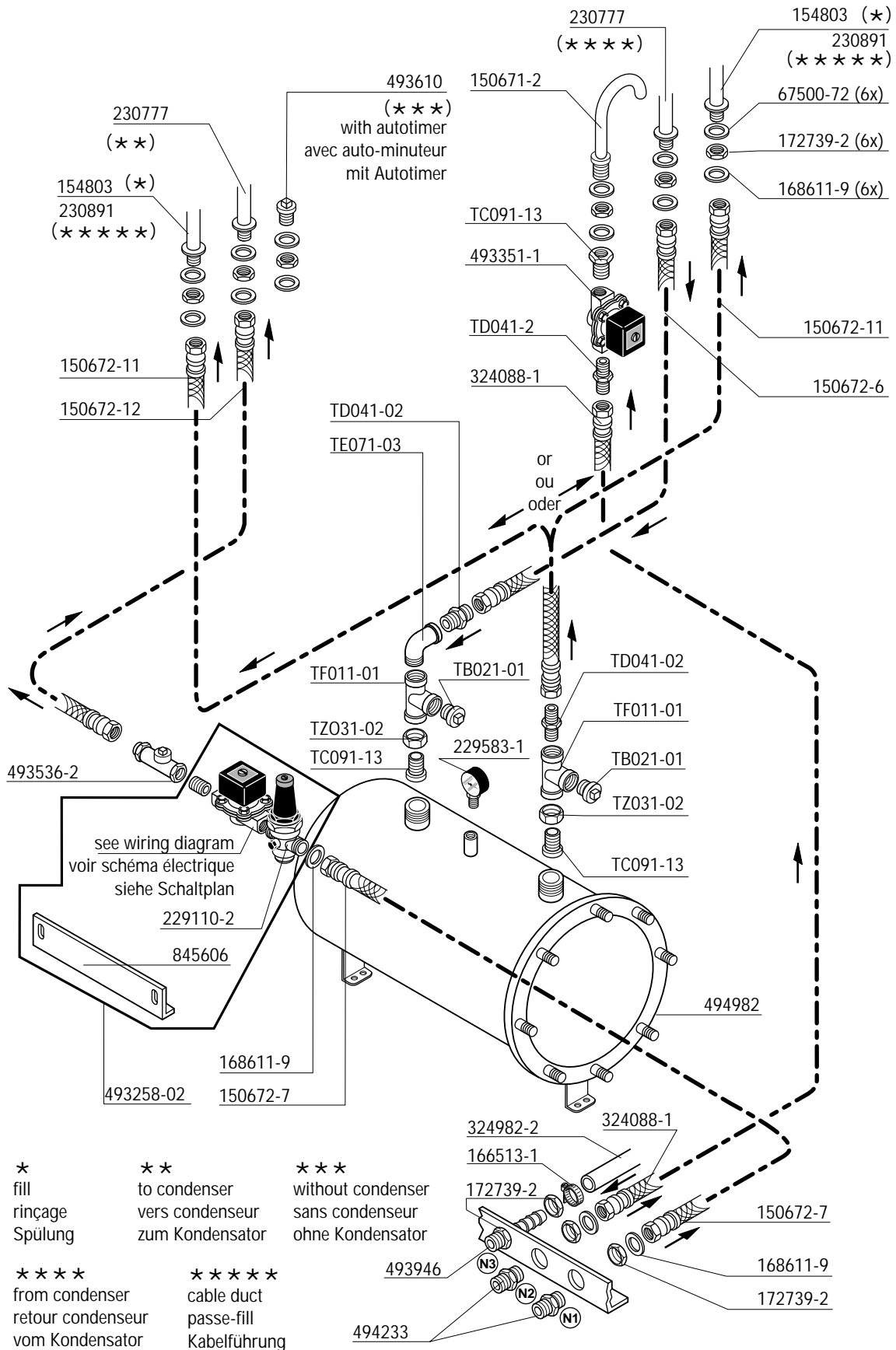


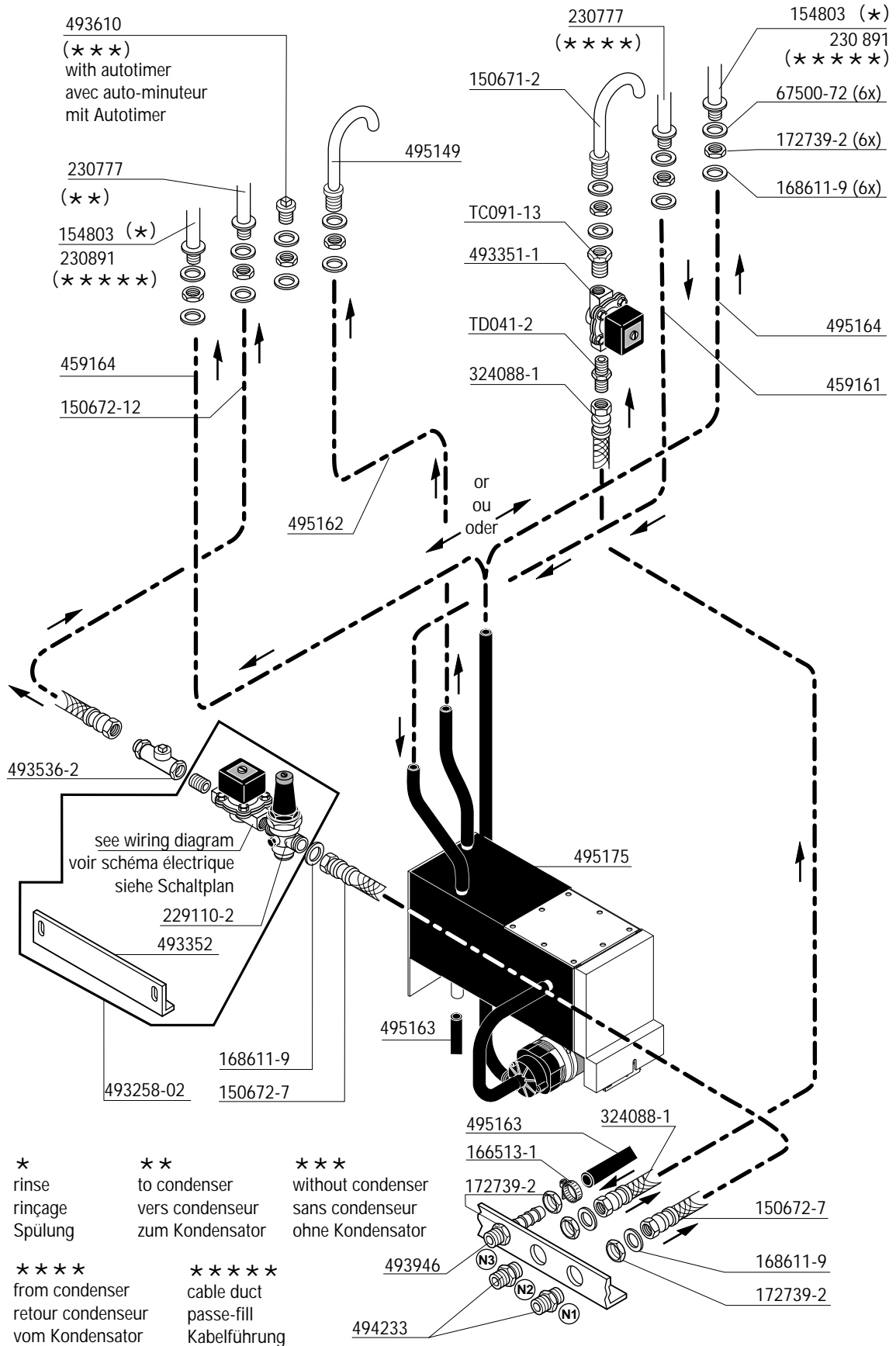


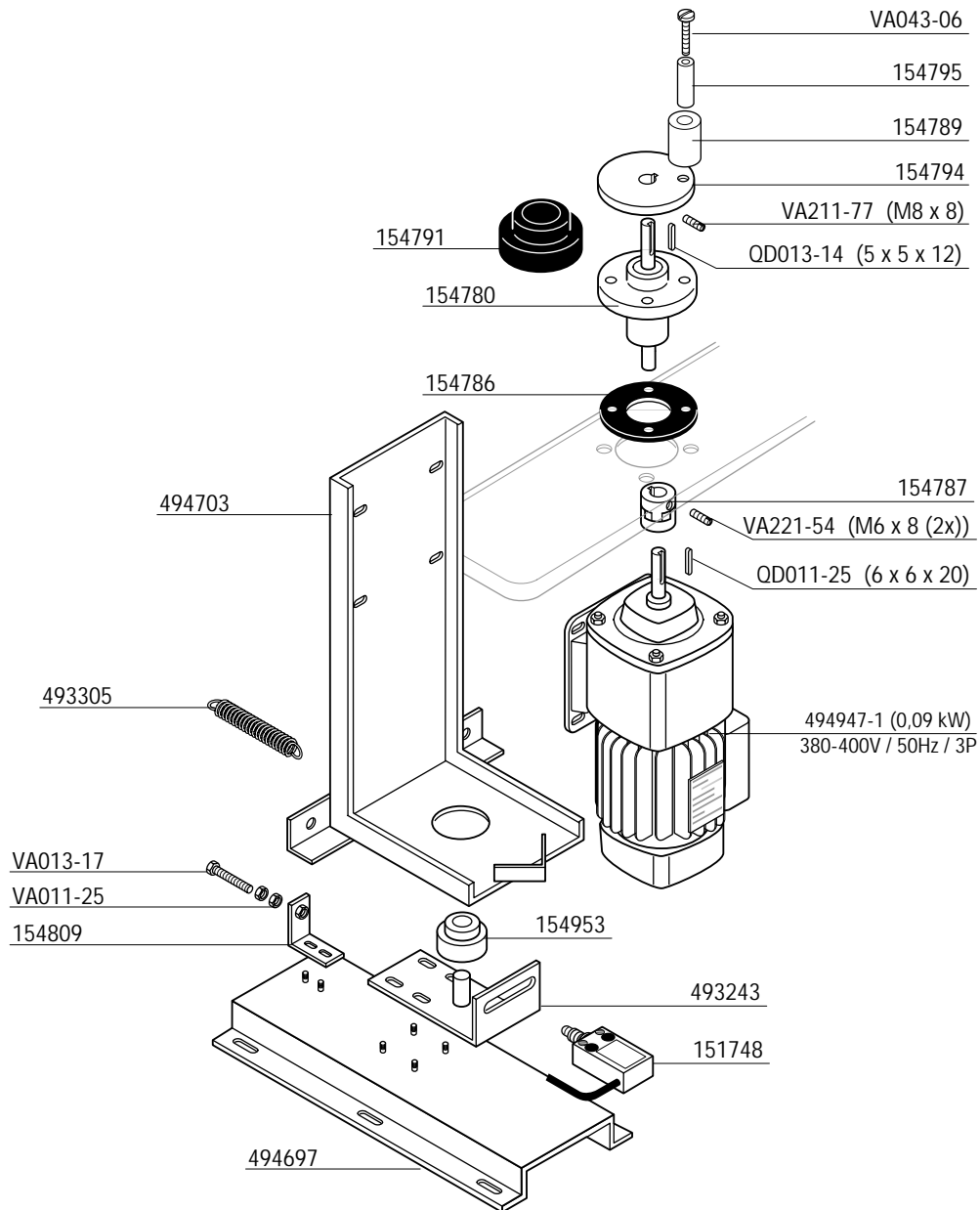




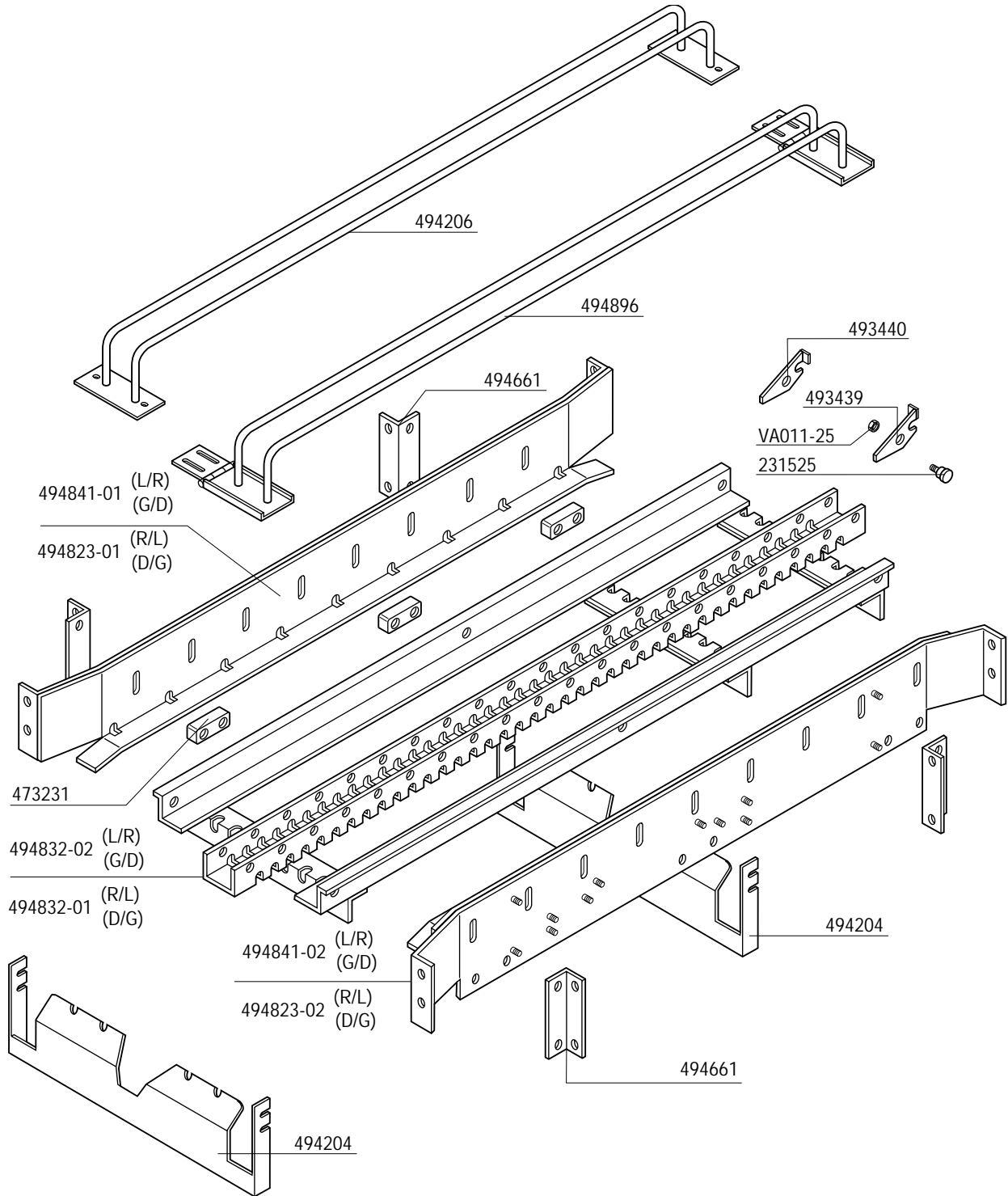


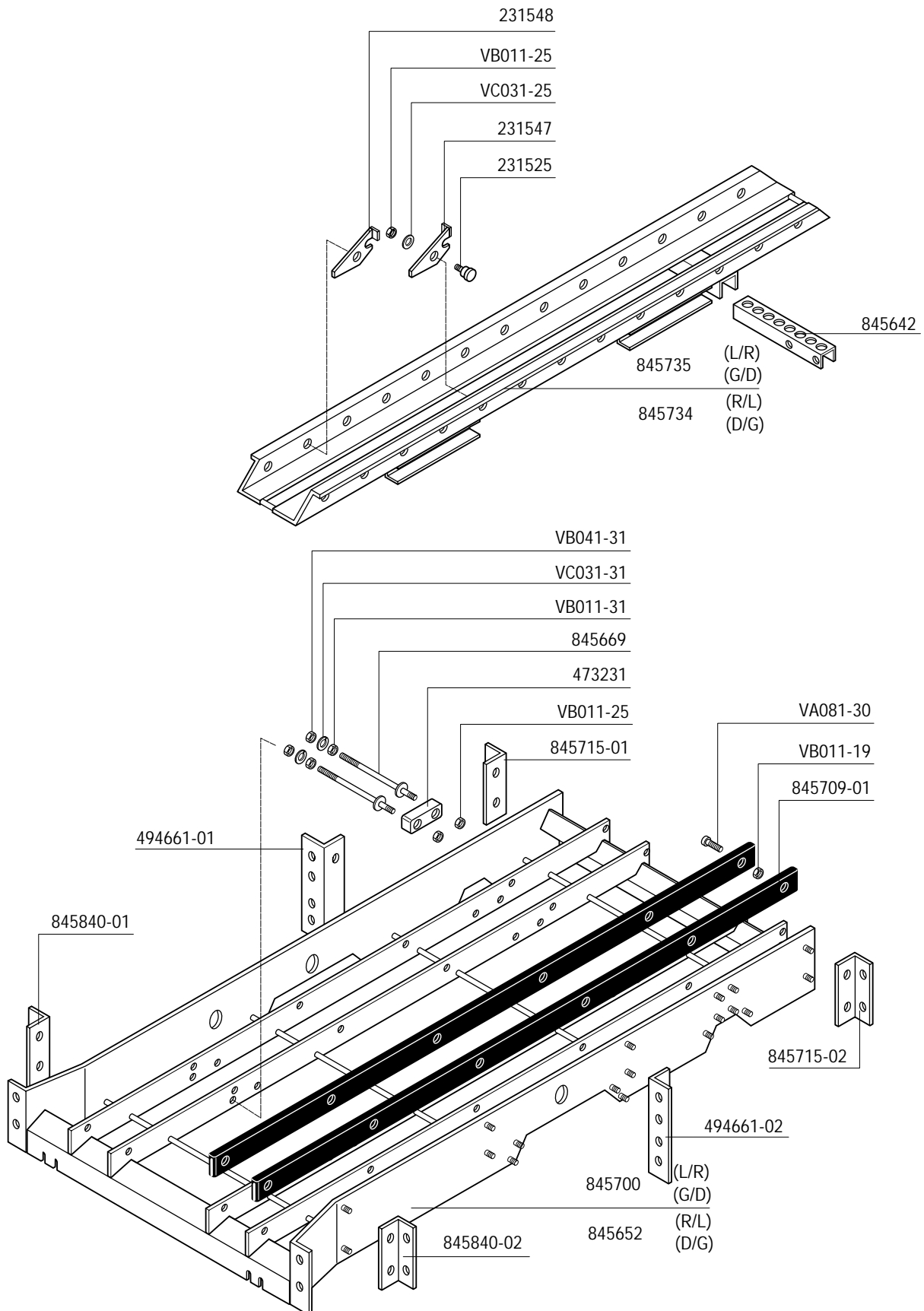


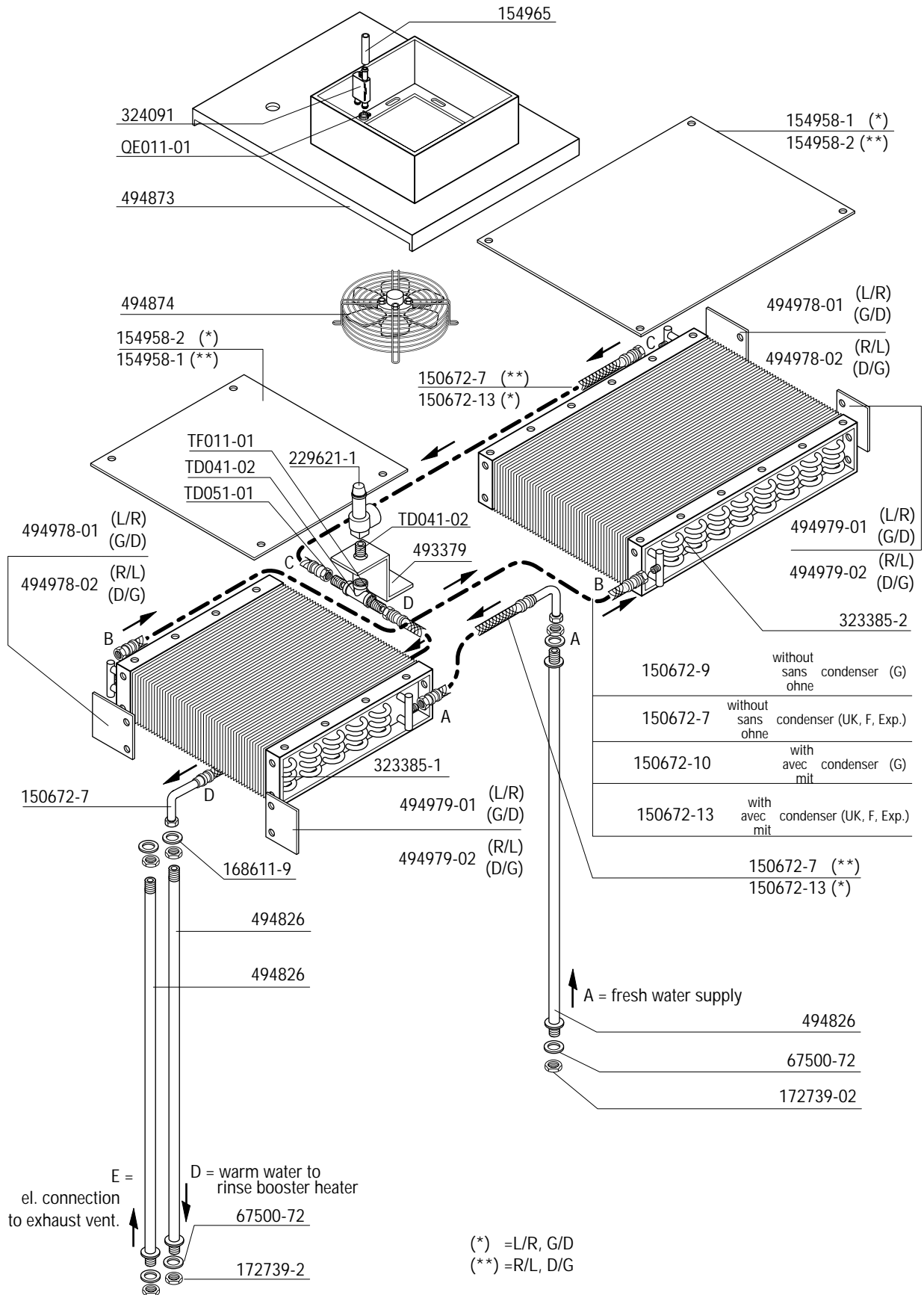


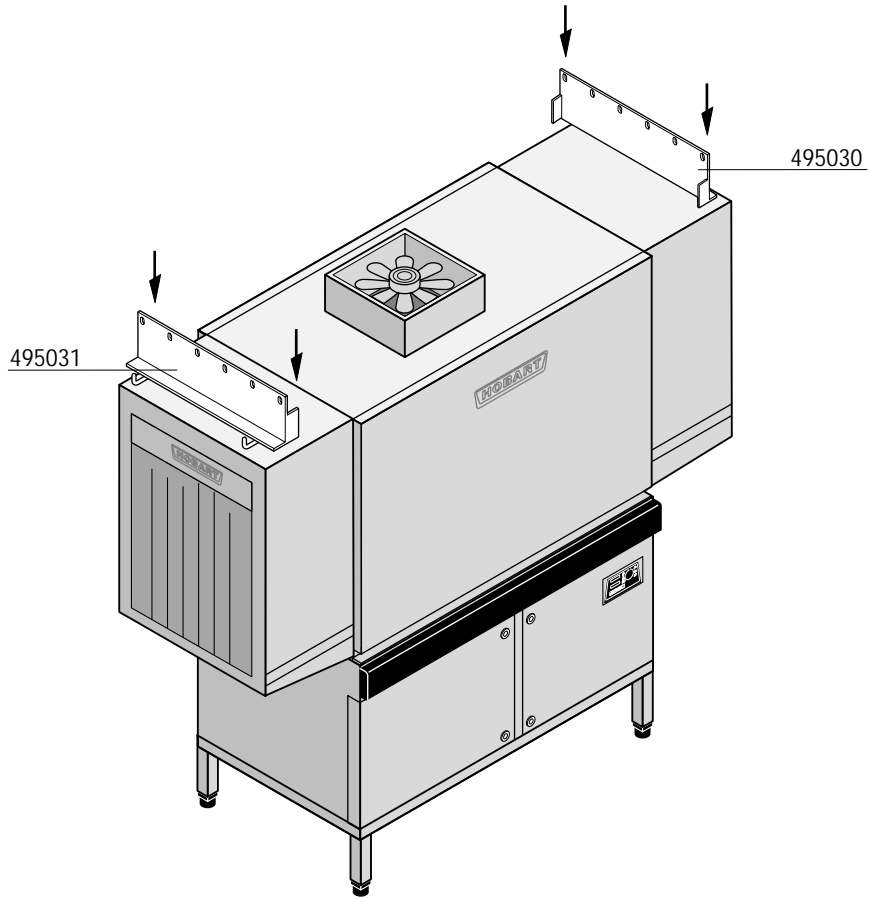












231540-8

494827

